

AMI seaware EnRoute

Graphical weather presentation and advanced route planning system predicts ship's dynamics as well as general performance in terms of speed, fuel consumption and ETA. Weather supplied by **Aerospace and Marine International (AMI)**.

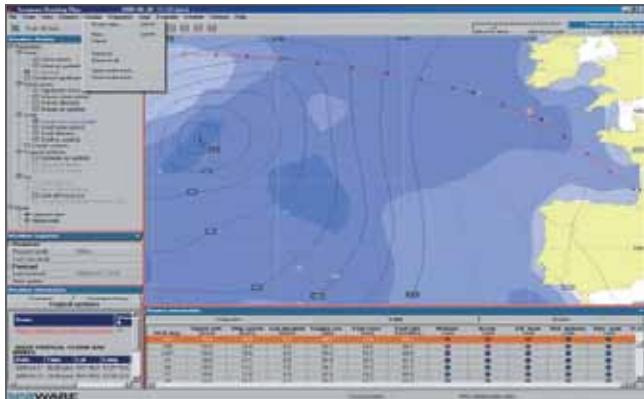
AMI Seaware EnRoute® is an advanced onboard route planning system from the Seaware Onboard product line.

Main features

- Graphical weather presentation.
- Graphical route planning tools.
- Prediction of ship's dynamics and general performance.
- Route comparisons.
- GPS interface provides route import and position tracking.
- Automatic route and performance updating.
- Daily ship-to-land reports.
- Easy installation and configuration.

User interface

The user interface is built around a chart on which selected weather parameters are graphically displayed.



Routes are input using waypoints to form a sequence of legs. New routes are easily created and edited interactively. Previous waypoints or routes may be restored from a library, or, with a GPS connection, the active route may be imported to the system online.

Having a GPS connection allows the current ship position, speed and heading to be plotted on the chart.

Route evaluation

The system evaluates the expected ship performance along the routes taking into account the weather pattern and the engine settings, as well as the main ship particulars and load condition.

The results are presented for each leg individually as well as for the entire route in terms of ship speed, fuel consumption and ETA.

Ship's dynamics

In addition to the basic performance evaluation, **AMI Seaware EnRoute®** predicts the ship's dynamics expressed as motions, accelerations, effective heel, dynamic stability, and hull girder loads.

AMI weather routing and customer support

- Forecast weather data for up to 10 days, available twice daily.
- Adjustable resolution, forecast area and forecast length.
- Tropical cyclone forecasts available up to four times per day.
- Pack ice limits available daily.
- Routing assistance.
- 24/7 customer support.
- Shore-based fleet monitoring with **AMI Fleet Manager**.

Automatic operation

With a GPS connection, the system can handle several tasks automatically. Requests for new weather data can be scheduled and administered by the system, assuring that the optimal amount of data is transferred in order to minimize the communication costs.

The route will be adjusted to match the current ship position, and the remaining parts re-evaluated each time new weather data arrives.

The system may be configured to regularly e-mail a route summary to one or more user-selectable addresses.

System requirements

- IBM PC or compatible, 1 GHz or faster.
- 512 MB RAM recommended.
- 250 MB free hard disk space.
- 19" display (1280 x 1024) recommended.
- Optionally one free PC COM port for GPS connection according to NMEA 0183, version 2.00.

Either of the following operating systems:

- Windows NT 4.0 Workstation, Service Pack 6a, Internet Explorer 5.0 or higher and Adobe TypeManager 4.1 or higher installed.
- Windows 2000/Windows XP.

In order to use online weather requests, the following is required:

- Network adapter with TCP/IP protocol.
- Dedicated e-mail account at e-mail server with support for SMTP and POP3 protocols (with attachments).

Contacts



AEROSPACE & MARINE INTERNATIONAL

6830 Via Del Oro, Suite 240, San Jose, CA 95119 USA
tel : +1 (408) 360 0440 / fax : +1 (408) 360 0450
www.amiwx.com / amiseaware@amiwx.com

seaware

Seaware AB

PO Box 1244, SE-131 28 Nacka Strand, Sweden
tel: +46 8 601 91 90 / fax: +46 8 601 91 91
www.seaware.se / info@seaware.se