

AMI seawARE EnRoute Live[®]

onboard real-time seakeeping guidance

Advanced route planning, combined with powerful on-line support at sea and useful post-voyage functionality. Weather supplied by Aerospace and Marine International (AMI).

AMI Seaware EnRoute Live[®] is the ultimate operational decision support tool from the Seaware Onboard product line.

Main features

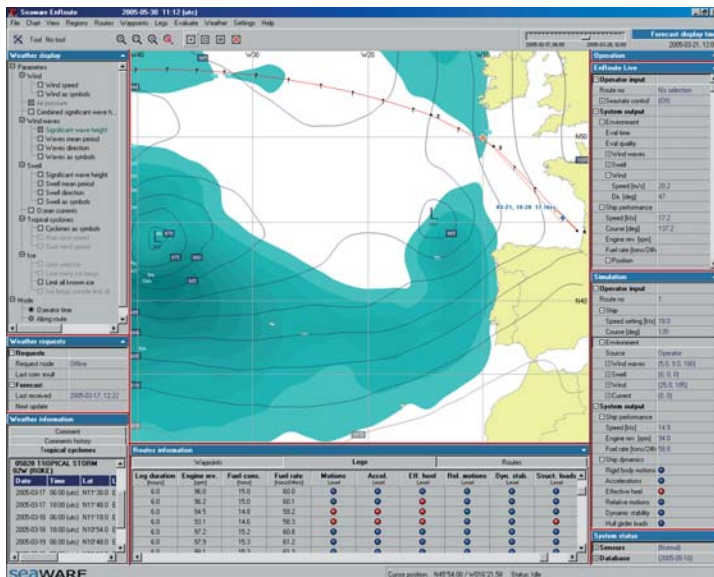
- Advanced route planning including ship's dynamics and general performance.
- Automatic and continuous evaluation of sea state and wave-induced effects at sea.
- Warnings issued for exceeded limits.
- Extensive real-time seakeeping support including tactical guidance in heavy weather.
- Recording of ship's dynamic behavior and performance.
- Post-voyage functionality.

Be aware ahead

AMI Seaware EnRoute Live[®] allows you to carefully plan your voyages and to detect and manage critical situations while at sea. Always based on your own ship-specific seakeeping characteristics.

User interface

The graphical user interface is adapted to match each specific ship. It includes displays for weather presentation and route planning as well as presentation of evaluated or simulated results along with related warnings.



Advanced route planning

The system evaluates the expected ship performance, taking into account the predicted weather pattern and engine settings, as well as ship data and load condition. The results are presented for each leg individually or for the entire route in terms of ship speed, fuel consumption and ETA.

In addition to the basic performance evaluation, AMI Seaware EnRoute Live[®] will predict the ship's dynamics expressed as motions, accelerations, effective heel, dynamic stability, and hull girder loads.

AMI weather routing and customer support

- Forecast weather data for up to 10 days, available twice daily.
- Adjustable resolution, forecast area and forecast length.
- Tropical cyclone forecasts available up to four times per day.
- Pack ice limits available daily.
- Routing assistance.
- 24/7 customer support.
- Shore-based fleet monitoring with AMI Fleet Manager.

At sea support

AMI Seaware EnRoute Live[®] continuously evaluates the surrounding sea during a voyage. The system predicts the near term dynamics, trying to detect situations that may be critical or dangerous with respect to user-defined limit values.

If such conditions are predicted, the warning functionality will alert the officers. The system also features an advanced seakeeping advice facility to support operational decision making.

Voyage records

All data are stored continuously, and the full history can be accessed post-voyage. Selected sequences from a particular voyage can be replayed.

These voyage records may also be used to establish data bases on ship's dynamic history and performance.

Customized to meet your specific demands

The software is pre-configured with hull geometry and other ship specific parameters and is delivered ready to use.

Components and required bridge instruments

- AMI Seaware EnRoute Live[®] software.
- Dedicated IBM PC or compatible with communication interfaces to sensors and e-mail server.
- Six degree-of-freedom high accuracy motion sensor.
- GPS, output NMEA 0183 version 2.00.
- Anemometer, output NMEA 0183 version 2.00.
- Dedicated e-mail account at e-mail server with support for SMTP and POP3 protocols (with attachments).

Contacts



Aerospace and Marine International

6830 Via Del Oro, Suite 240, San José, CA 95119 USA
www.amiwx.com, amiseaware@weather3000.com
 tel: +1 (408) 360-0440, fax: +1 (408) 360-0450



Seaware AB

PO Box 1244, SE-131 28 Nacka Strand, Sweden
www.seaware.se, info@seaware.se
 tel: +46 8 601 91 90, fax: +46 8 601 91 91